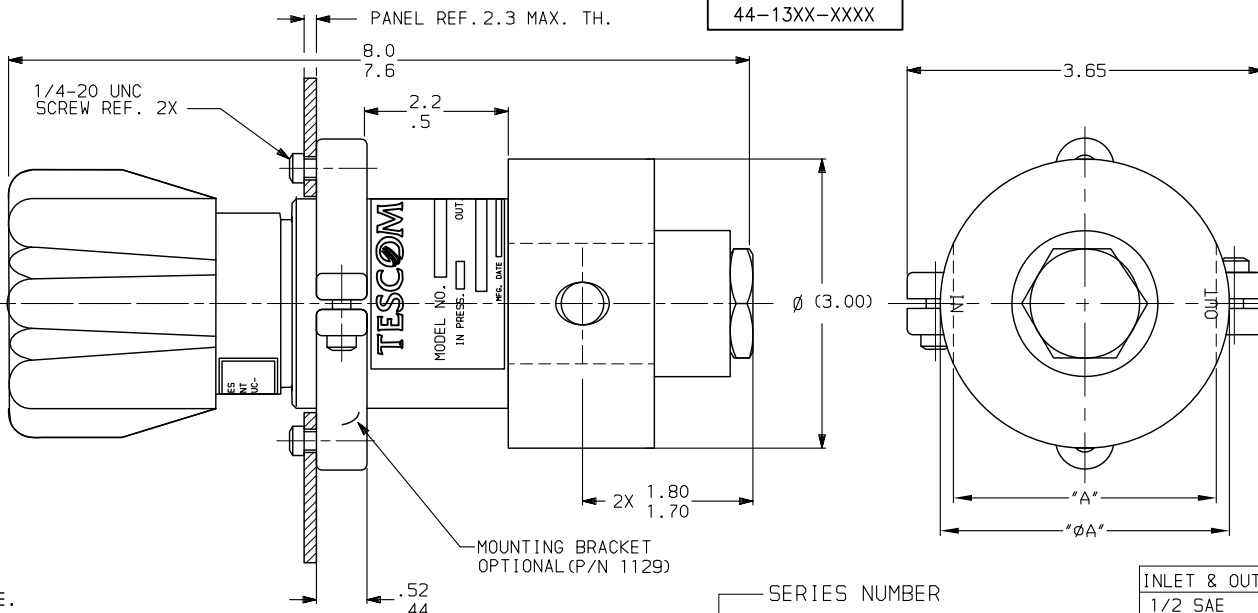
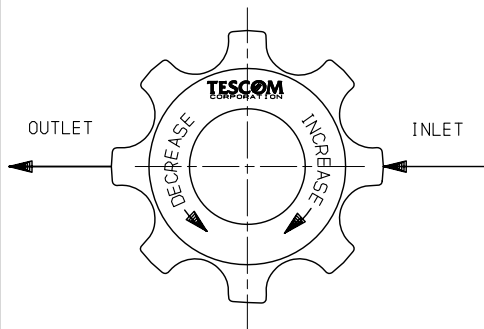


ALL DIMENSIONS REFERENCE



44-1300 SERIES REGULATOR

SPRING, LOADED, HAND OPERATED, PRESSURE REDUCING REGULATOR WITH INTEGRAL SELF RELIEVING VENT VALVE.

INLET & OUTLET PORT	"A"
1/2 SAE	2.70
1/2 & 3/4 NPT	Ø2.97
1/2 & 3/4 MS33649	Ø2.97
1/2 & 3/4 BSP	Ø3.50

GENERAL SPECIFICATIONS:

INLET PRESSURE: SEE TABLE I  
 OUTLET PRESSURE: SEE TABLE II  
 DESIGN PROOF PRESSURE: 150% OF RATED PRESSURE  
 PRESSURE RATING: PER CRITERIA OF ANSI/ASME B31.3  
 OPERATING TEMPERATURE: -15°F TO +220°F  
 LEAKAGE: BUBBLE TIGHT  
 FLOW CAPACITY (C.V.) SEE TABLE V  
 WEIGHT: APPROXIMATELY 6.25 LBS.

MATERIALS CONTACTING LINE MEDIA:

MAIN VALVE SEAT: CTFE  
 MAIN VALVE SEAT: TEFLON 44-13X2-XXX2  
 VENT VALVE SEAT: TEFLON 44-13X2 & 44-13X3  
 VENT VALVE SEAT: CTFE 44-13X5 & 44-13X6  
 BACK CAP: 300 SERIES SST  
 BODY: SEE TABLE I  
 BACK-UP RINGS: TEFLON  
 O-RINGS: VITON  
 GASKETS: CTFE  
 REMAINING PARTS: TYPE 17-4, 300 SERIES SST  
 17-7, TEFLON & BRASS

ASSEMBLY INFORMATION:

FOR ASSEMBLY OF THIS UNIT USE SPEC: A60030-01  
 KITS:

NONMETALLIC:

389-1873 - - - 44-13XX-XXX1  
 389-1874 - - - 44-13XX-XXX2  
 389-2726 - - - 44-13X2-XXX2

REPAIR:

389-1875 - - - 44-13XX-XXX1  
 389-1876 - - - 44-13XX-XXX2  
 389-2727 - - - 44-13X2-XXX2

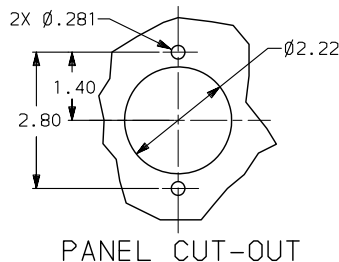
DASH NO.	BODY MATERIAL	INLET PRESSURE
1	BRASS	3750 PSI
2	303 SERIES SST	4500 PSI
6	316 SERIES SST	4500 PSI

DASH NO.	OUTLET PRESSURE
2	0-300 PSI
3	0-600 PSI
5	0-1000 PSI
6	0-1500 PSI

DASH NO.	PORT TYPE
1	SAE
2	NPT
3	MS33649
9	BSP

DASH NO.	ORIFICE SIZE	FLOW CAPACITY
1	Ø .250	Cv = .80
2	Ø .375	Cv = 2.0

DASH NO./LTR	INLET & OUTLET PORT SIZE
08	1/2
12	3/4



			MATERIAL:
INFORMATION CONTAINED ON THIS DOCUMENT IS THE PROPERTY OF TESCOM CORPORATION. NO RIGHTS ARE CONVEYED NOR IS PERMISSION TO DISCLOSE TO OTHERS GIVEN.			FINISH:
UNLESS OTHERWISE SPECIFIED: .0 ± .020 ANGLES: ±1° .00 ± .010 .000 ± .005 SURFACE ROUGHNESS: 100/ CORNER & FILLET RADII: .005-.020 THREADS: CLASS 2 REMOVE ALL BURRS MFG. SPEC. 00301			DRAWN BY: SJW CHECKED BY: JD APPROVED BY: JD
REVISIONS REFERENCE DRAWING(S)			NAME: INSTALLATION INFO. SCALE: 1:1 SIZE NUMBER: 44-13XX-XXXX CODE NO. 13669 SHT. 1 OF 1